



SIERRA 7" LSD HALF SHAFT MODIFICATION

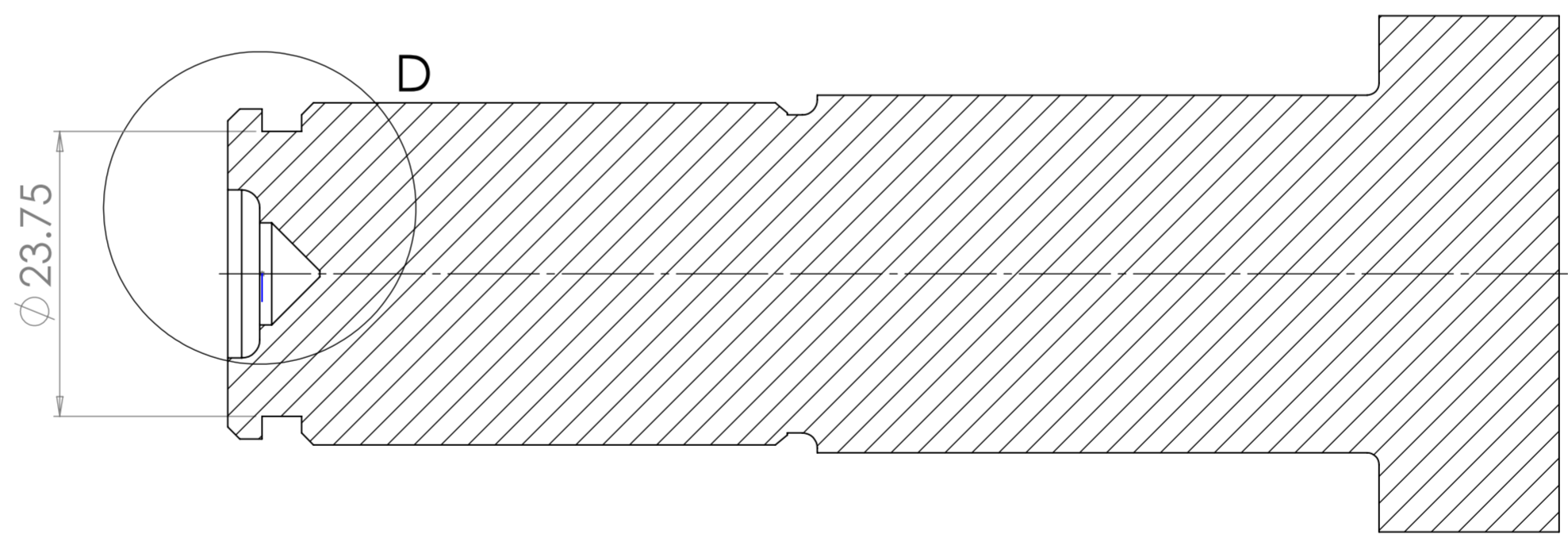
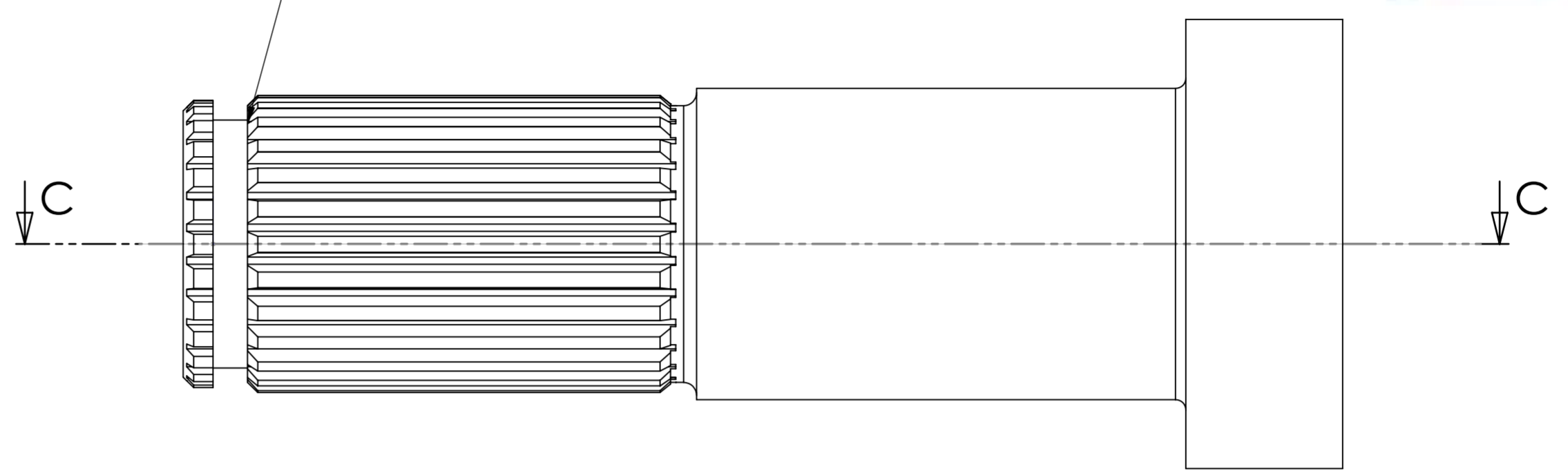
THE ORIGINAL SIERRA DIFFERENTIAL UNIT USED THREE TYPES OF SHAFT FITMENT. DEPENDING ON THE SHAFTS YOU HAVE, YOU MAY NEED TO MODIFY THEM TO FIT THE SNAP CLIP SUPPLIED WITH THE LSD UNIT

THE TYPES OF SHAFT ARE LISTED BELOW.

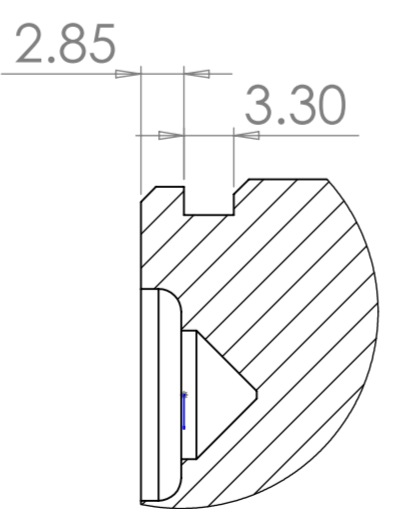
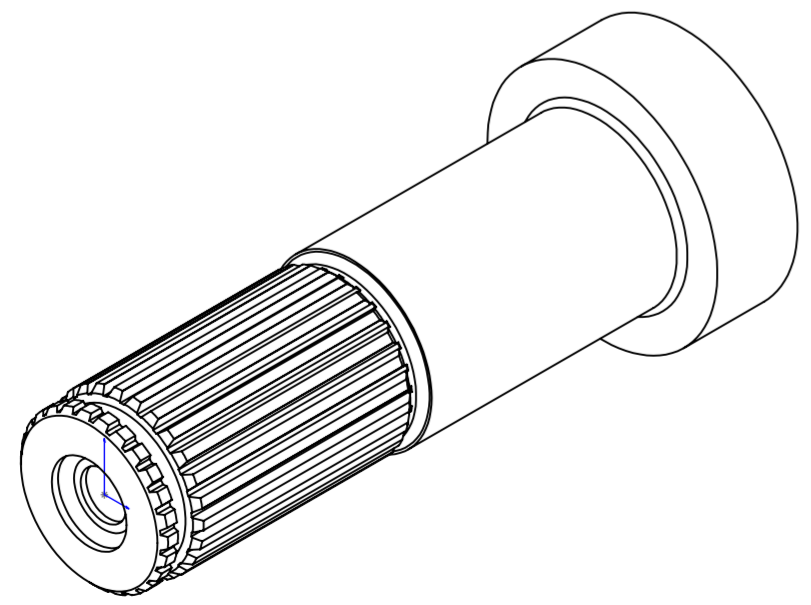
- THE STANDARD PUSH FIT SHAFT-** THESE SHAFTS HAVE NO GROOVES AND ARE A DIRECT FITMENT FOR A 3J LSD
- BOLT ON HALF SHATFS FROM A STANDARD OPEN DIFF-** THESE SHAFTS ARE OF EQUAL LENGTH AND HAVE A CLIP GROOVE ALREADY MACHINED IN WHERE THE ORIGINAL CIRCLIP WAS FITTED.THE GRROVE NEEDS TO BE MADE SLIGHTLY WIDER AND DEEPER TO THE GIVEN DIMNSIONS FOR THE SUPPLIED CLIP TO FIT
- BOLT ON HALF SHAFTS FROM A VISCOUS LSD -** THESE SHAFTS ARE FITTED TO THE XR4x4, COSWORTH ETC. AND ARE OF AN UNEQUAL LENGTH. THESE SHATFS CANNOT BE USED WITH A 3J UNIT IN ANY WAY AND SOME ALTERNATIVE SHAFTS SHOULD BE SOURCED OF THE TWO OTHER TYPES

SNAP RINGS ARE PRODUCED BY SPRING MASTERS UK
 PART NO. RWM026

CLIP GROOVE NEEDS TO BE MODIFIED TO THE GIVEN DIMESIONS FOR FITMENT OF THE SNAP RINGS CLIPS SUPPLIED WITH YOUR LSD UNIT.



SECTION C-C
 SCALE 2 : 1



DETAIL D
 SCALE 2 : 1

HEATTREAT	PART NO. INCLUDING BATCH CODE TO BE MARKED AT POSITION ⑥	3J DRIVELINE	
STANDARD TOLERANCES 0.00 ± 0.025MM 0.000 ± 0.0127MM SURFACE FINISH 1.6 UM UDS		SAND BLAST:	OIL:
DRAWN BY: DATE:		TITLE FORD 7 INCH SHAFT MODS	
MANUFACTURING STAGE: FINISHED DRAWING		MAT FORM:	SUPER FINISH:
FINAL FINISH:		MATERIAL:	
DO NOT SCALE		DWG NO. 7 INCH SHAFT	SHEET SIZE A2
PROJECT TITLE:			